

The Laws own or control the following waterfront parcels on Lake Charlevoix (Source: Charlevoix County Advanced Tax Parcel map found at: <https://mangomap.com/charlevoix-county/maps/52165/advanced-tax-parcel-map?preview=true#>)

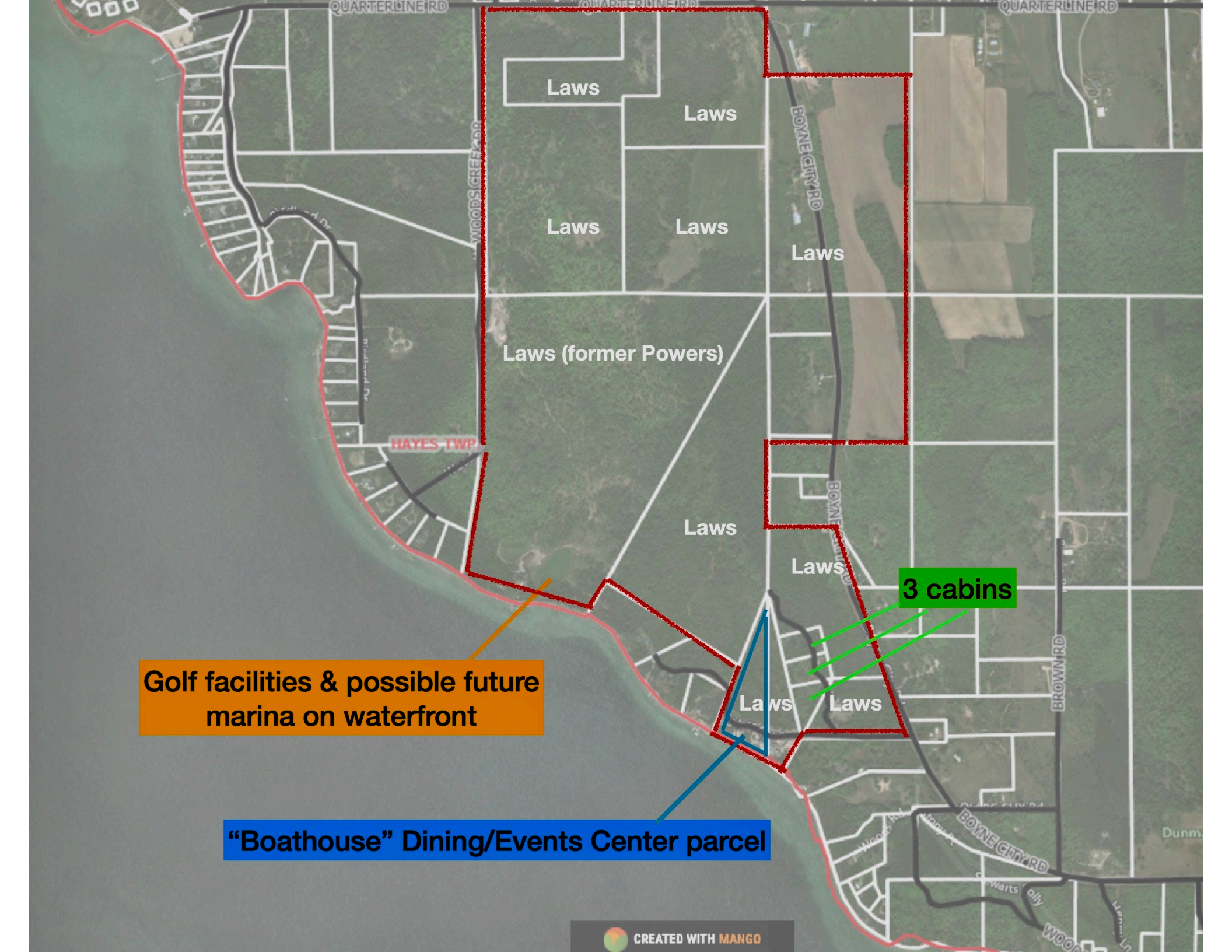
|            |                            |       |       |  |
|------------|----------------------------|-------|-------|--|
| 132-005025 | Scott and Debra Law        | 9.1   | Acres | Subject property applied to USACE for this project, contains half of Law residence |
| 133-005-30 | Scott and Debra Law        | 6.2   | Acres | Contains other half of Law residence   |
| 132-001-10 | Former Bob Powers property | 121.4 | Acres | Contains a waterfront residence surrounded by golf amenities and permanent dock    |

And the following parcels near the shore of Lake Charlevoix:

|            |                       |       |       |                 |
|------------|-----------------------|-------|-------|-----------------|
| 145-000-00 | Anglers Acres Condo   | 20.03 | Acres | Guest cabin PUD |
| 129-005-10 | Quarterline Annex LLC | 65.5  | Acres |                 |
| 129-006-00 | Quarterline Annex LLC | 16.4  | Acres |                 |
| 129-004-00 | Quarterline Annex LLC | 32.6  | Acres |                 |
| 129-008-10 | Quarterline Annex LLC | 40.1  | Acres |                 |
| 128-011-00 | Quarterline Annex LLC | 60.5  | Acres |                 |

|             |                            |        |       |             |
|-------------|----------------------------|--------|-------|-------------|
| 133-009-20  | Quarterline Annex LLC      | 26.4   | Acres |             |
| 132-001-30  | Quarterline Annex LLC      | 57.7   | Acres |             |
| 133-009-15  | Boyne City Real Estate LLC | 13.2   | Acres |             |
| 133-009-10  | Quarterline Annex LLC      | 0.9    | Acres |             |
| 145-001-00  | Scott and Debra Law        | 2.2    | Acres | Guest cabin |
| 145-002-00  | Scott and Debra Law        | 2.2    | Acres | Guest cabin |
| 145-003-000 | Scott and Debra Law        | 2.2    | Acres | Guest cabin |
| 133-014-35  | Scott and Debra Law        | 9.6    | Acres |             |
| TOTAL       |                            | 486.23 | Acres |             |

On the map below, one can see how all the properties owned or controlled by the Laws or their business entities (outlined in red) amass to a nearly 500 acre contiguous property area they are developing as a cohesive project, with large amounts of frontage on Lake Charlevoix. (Prepared by LuAnne Kozma using Charlevoix County parcel map).



Laws

Laws

Laws

Laws

Laws

Laws (former Powers)

Laws

Laws

3 cabins

Golf facilities & possible future marina on waterfront

“Boathouse” Dining/Events Center parcel